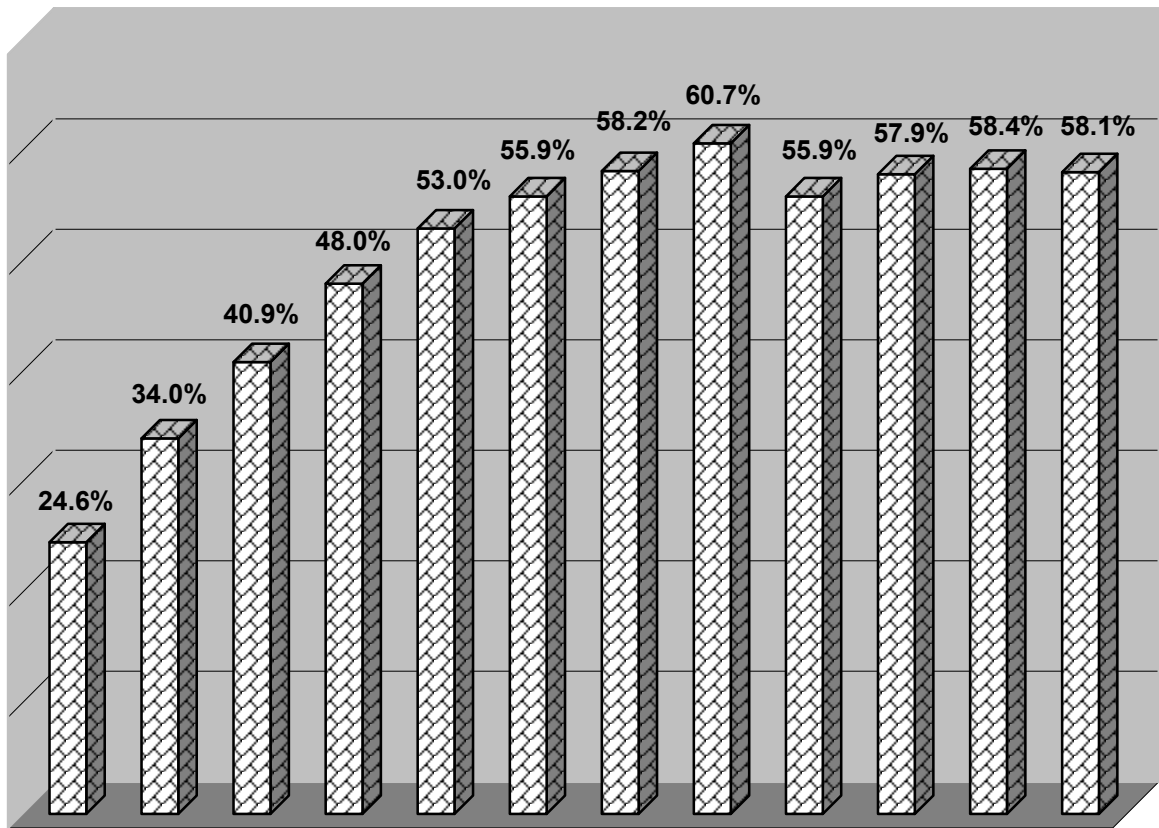


# Steel Can Recycling



1990 1991 1992 1993 1994 1995 1996 1997 1998 1999 2000 2001

Source: Steel Recycling Institute

## Data

2001	58.1%
2000	58.4%
1999	57.9%
1998	55.9%
1997	60.7%
1996	58.2%
1995	55.9%
1994	53.0%
1993	48.0%
1992	40.9%
1991	34.0%
1990	24.6%

